



Consult



Design



Install



Monitor



**GYROSCOPE
TECHNOLOGY**
A PASSION FOR PRECISION





About us



Founded in 1999 Gyroscope Technology. has been a member of the DMA Automation Group since 2015. First office was located in Missouri kassas City. six years after, Gyroscope Technologies & Automation opened office in Missouri In 2016 all of locations was removed and concentrated in Phoenix Arizona .

Gyroscope Technology have two workshops. First workshop is used and called as Research and Training Center. There we creating and enveloping new technologies connected with indrustrial robots, Lasers , Acoustic wavelength sensors Second workshop used is for assembly and manufacturing. In same place are located offices where our engineers designing, planing and writing software.

“ *We are creating solutions* ”



About our partners & Consortium

Gyroscope Tech & Automation Group is an organization of three businesses (from the same industry sectors and countries) joining together as a group for a shared purpose: pooling Our human resources to undertake a large project that benefits all members of the group.



Industrial Radio Networking

4RF radios are specifically designed for the mission-critical environment, ruggedized, temperature rated, advanced security and engineered for automation networks and mobility

Automation Group Partner for 4RF



Remote Telemetry Units

Powerful RTU and PLC universal controllers for the water, rail and electricity industries. Flexibility and performance in both control and communication

Automation Group Partner for Brodersen



Industrial Control & Automation

Cisco is a leading provider of networking hardware and IP based telephony systems. Cisco is also a global provider of specialist software solutions and is consistently ranked as one of the world's leading networking companies

Registered Partner of Cisco



Industrial Automation & Control

Emerson (formerly GE Fanuc / GE-IP) is an experienced high-performance technology company and a global provider of software, control system hardware solutions and embedded systems

Emerson / GE System Integrator and Solution Provider



About our consortium



Industrial Control & Automation

Rockwell Automation is a leading global provider of automation, power, control and information solutions that provide a competitive advantage via an extensive range of products

Rockwell Automation System Integrator



Industrial Control & Automation, Energy Management, Critical Power Systems

Schneider Electric are the global specialists in control, automation and energy management and have a comprehensive range of products and services for the industrial, energy, infrastructure and building markets

Schneider Electric Certified Alliance System Integrator and Critical Power EcoXpert



Automation Technology

Siemens is the world's single-source leader of automation technology products engineered and manufactured for all industrial sectors

Siemens Certified Solution Partner



Generator Control Systems

Woodward controllers enhance the performance of industrial gas and steam turbines, reciprocating engines, compressors, wind turbines, electrical grids and other energy related industrial equipment.

Woodward System Integrator



Experience of the Group

Robots systems



- ABB
- KUKA
- FANUC
- COMAU
- YASKAWA

PLC systems



- SIEMENS
- ALLEN-BRADLEY
- GE FANUC
- MITSUBISHI
- SCHNEIDER
- HITACHI
- OMRON
- BECKHOFF

HMI systems



- SIEMENS
- ROCKWELL
- ZENON
- GE FANUC
- PROFACE
- RESOTECH

SCADA systems



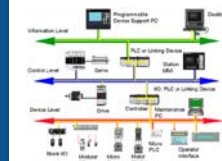
- SIEMENS
- ROCKWELL
- WEINTEK
- WONDERWARE
- DÜRR ECO SCREEN
- IFIX
- ASIX

Electrical systems



- EPLAN P8 v1.9
- EPLAN P8 v2.0
- EPLAN P8 v2.1
- EPLAN P8 v2.2
- EPLAN P8 v2.3
- EPLAN P8 v2.4

NET systems



- PROFINET
- PROFIBUS
- DEVICENET
- MODBUS
- INTERBUS
- MULTIBUS



Experience of the Automation & Integration

Engineering



- DESIGNING
- PROGRAMMING
- COMMISSIONING
- 3D SCANNING
- 3D PRINTING
- MANUFACTURING

Testing



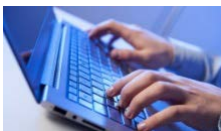
- TESTING FUNCTIONALITY
IN OUR LABORATORIES
- VIRTUAL COMMISSIONING
- PRE-COMMISSIONING

Electrical instalations



- CONTROL CABINETS
ASSEMBLING
- ELECTRICAL INSTALLATIONS
ON SITE

Software examples



- PROCESS SIMULATE
- ROBOT STUDIO
- ROBO GUIDE
- STEP7
- TIA PORTAL
- RS LOGIX
- EPLAN P8
- AUTO-CAD
- INVENTOR

Other activities



- PROJECTS PLANNING
- PROJECTS MANAGEMENT
- HANDOVER TO CUSTOMERS
- TRAININGS FOR CUSTOMERS

People



- LONG EXPERIENCE IN
AUTOMATION MARKET
- FRIENDLY ATMOSPHERE
IN THE GROUP
- SMART AND BEST SELECTED
STUDENTS



What Gyroscope Tech, Group Doing ?



Offline simulation of processes : (Process Simulate, RobotStudio, RobCad)



Automation of production processes



Programming of PLC controllers (Siemens and Allen-Bradley)



Programming of industrial robots : ABB, Kuka, Fanuc, Comau, Yaskawa



Creating own technologies / packages for industrial robots



Cycle time optimization



Increase production efficiency and production support (OEE analysis)



3D Printing and 3D Scanning



Trainings from robots programming, PLC programming.

Designing and manufacturing modular robot cells.



Exempld references

Volvo

- Integration 12 KUKA robots at Volvo's plant in Samut Prakan 2016 with KUKA company.



Daimler

- Integration local partners Thonburi Automotive Assembly Plant (TAAP) and Thonburi Energy Storage Systems (TESM),



Summit Group

ROFIN - LASAG Laser Welding system and Laser engraving connecting rod Thai Summit Engineering



Rest of references





Our products : TCPSearcher

The company's offer includes, among others, a device called TCPSearcher, which has the following advantages:

- 1 Increases the precision of technological processes,
- 2 Maintenance-free calibration of the robots tools,
- 3 The ability to scan various types of tools: MIG / MAG torch, adhesive nozzle, spot welding guns, welding, Tucker heads, etc.
- 4 Low cost of the device compared to the benefits gained.

Tool is available for



and can be adapted for any kind of industrial robots.





Our products : Vision system

Another available product is the industrial robot application connected to the Evatronix 3D scanner. This scanner is used for:

- 1 Scanning objects and creating CAD files.
- 2 Navigating a robot by reading the position of the element being processed.
- 3 Quality measurements.
- 4 Inspection of products : presence of parts, presence applied technology by robots (glue seams, weld seams), etc.

The scanner is available for all brands of industrial robots. The company offers also many other interesting solutions.





Our purposes

Delta Automation Sp. z o.o. basing on own experiences, experiences of our engineers and additionally supported by DMA Automation Group wants to reach high position on the market providing following services :



Complex services

Through strength of the Group we want provide complex and best services in the field of automation scope.



Technology development

Strong development by software creation, design and manufacturing new equipment for robotizing. We connecting new technologies with industrial robots.



Training center

Provide best trainings in the scope of robots programming and PLC programming.



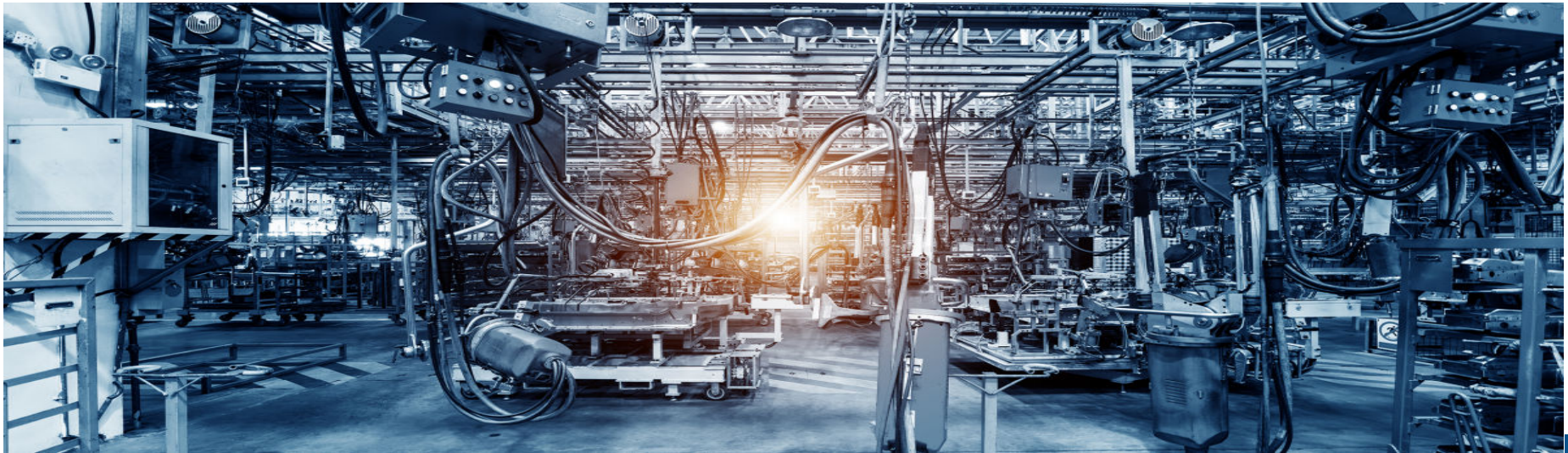
Consulting

Increasing production volume by cycle time optimization and by process automation. Quality improvement and defects reduction.



The end

Thank You for Your attention.



Contact Us

Tel:662 328 6721-5
555/20 Office Cluster , Bangkok
10250 Thailand

Tel:(888) 817-6314
International Headquarter
10585 Enterprice Drive
Davisburg ,MI 48350